



SWITZER & ASSOCIATES

SHAWN RITCHEY, CAI

PRINCIPAL BROKER & AUCTIONEER

Home of
**EVERYBODY'S
REALTORS &
AUCTIONEERS**

Serving your
community since
1959.

**SHAWN RITCHEY
CAI**



Cell
859-588-0261

Switzer & Associates

Shawn Ritchey, CAI

Principal Broker
111 S. Walnut St.
Cynthiana, KY 41031
Office

859-234-2911

859-234-2912

Fax

859-234-6697

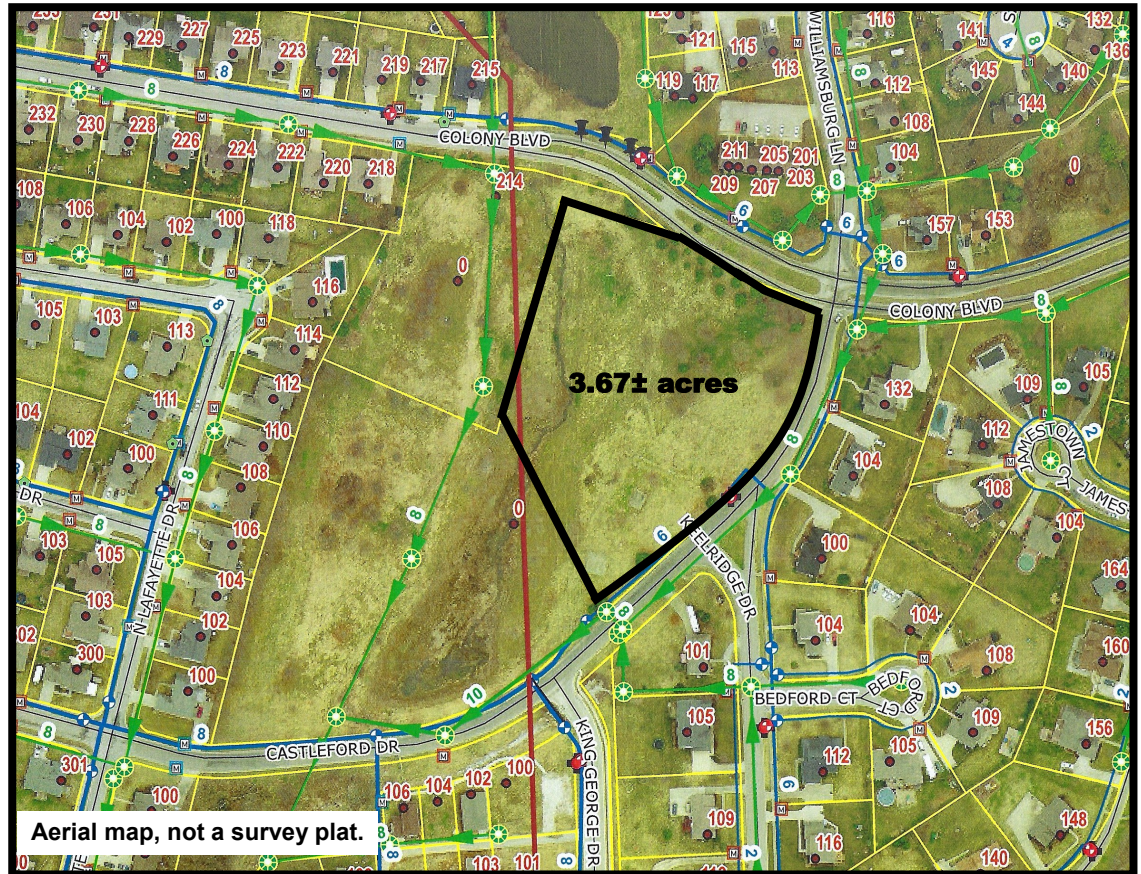
Web-site

www.switzerassoc.com

E-mail

switzer2911@bellsouth.net

111 Castleford Drive, Georgetown KY



3.67± acre lot

Located in The Colony subdivision

Zoned R-3

Electric, water and sewer services available

Excellent investment property for future homes

\$64,900

Purchaser must verify utilities
Subject to P&Z approval

INFORMATION CONTAINED HEREIN IS BELIEVED TO BE ACCURATE BUT NOT WARRANTED